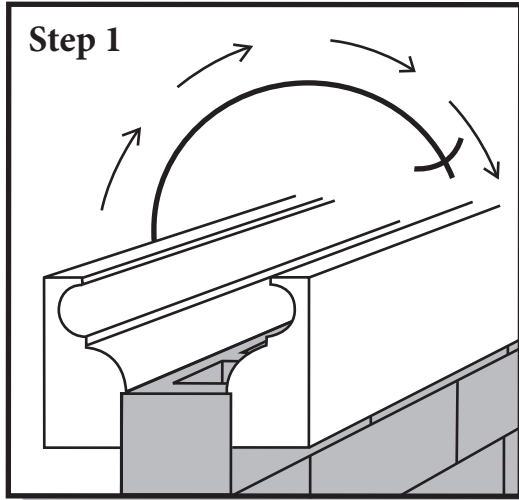


Wall Cap Form

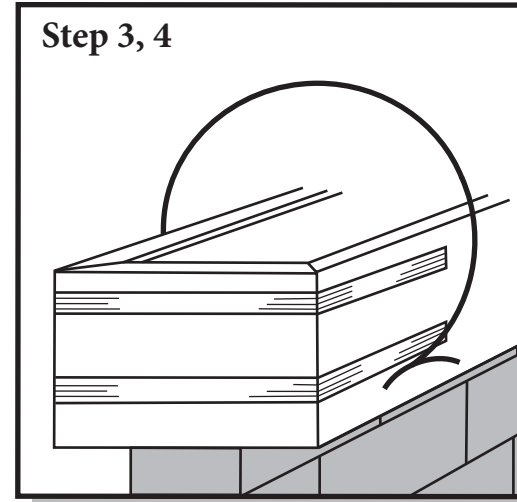
Tech Support (800) 382-5430



Instructions:

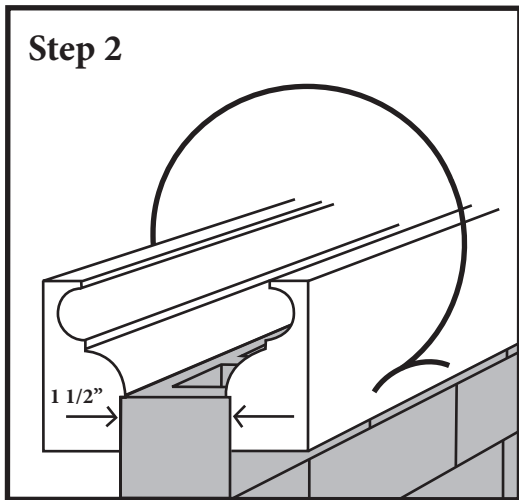


Step 1. Wall Cap Form installation is a two person job, having one person on each side of the wall. Place the Wall Cap Form on the top of the wall with the lip of the form resting on top of the wall (this will position the form to elevation). With each person holding the form in place, the first person inserts one side of the spring clamp in place (holding firmly). The second person pulls the other side of the spring clamp up and over the second form and positions the spike in place.

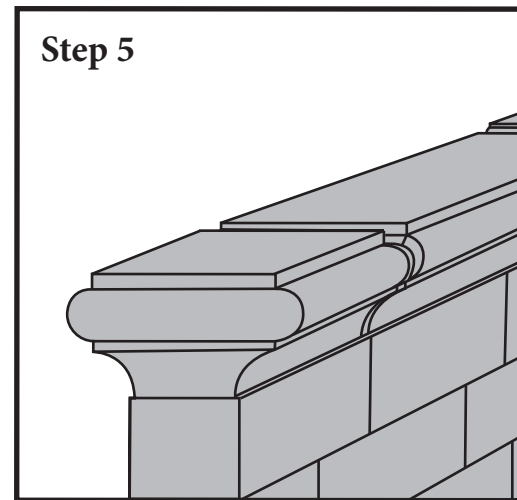


Step 3. For best results, miter cut corners. To reinforce corners, band them using tape.

Step 4. While pouring, make sure to tap the forms. This will release the air bubbles and help to prevent honeycombing.



Step 2. Space the Spring Clamps approximately 14" to 16" apart.



Step 5. Once the concrete can support its own weight, the forms should be removed. Remove the spring clamps and pull the form down and away, exposing the face for finishing.