

CHILD SAFETY GRIP

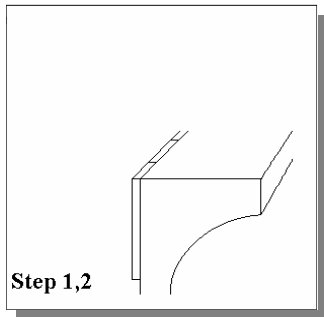
Cantilever Form Instruction Sheet

STEGMEIER
LLC

www.stegmeier.com

Tech Support (800) 382-5430

DOWNLOAD THE LATEST STEGMEIER APP, AVAILABLE FOR IOS AND ANDROID

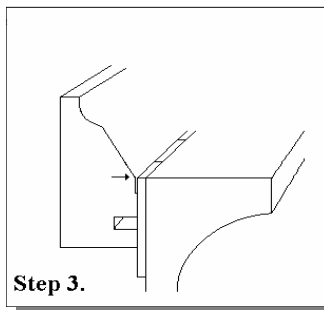


Step 1. Tile must be set from the high point of the bond beam and bedded out level. Scrape the top of the tile to remove any debris that would cause the tile strip to fit unevenly around the perimeter.

Step 2. Wipe the tile down with a clean cloth to remove any moisture or dust.

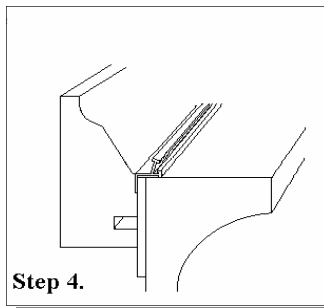
Step 3. Peel the paper on the double-faced tape (one foot at a time) and stick the form to the tile with the bottom of the decorative profile edge level with the top of the tile.

Note: During cold weather it may be necessary to warm the tile prior to sticking the form.



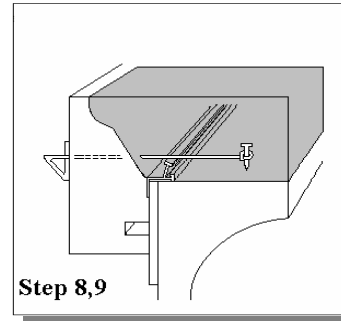
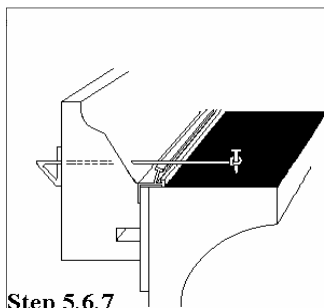
Step 4. Place the tile strip in the form (as shown in the illustration). The tile strip should lay flat on the tile and be butted up snug to the next tile strip.

Step 5. Lay a bond breaker down on the bond beam. The bond breaker will separate the concrete from the tile bed. The bond breaker can be 15 lb. felt paper.



Step 6. Drive the concrete nails into the bond beam 14" apart and 8" from the tile.

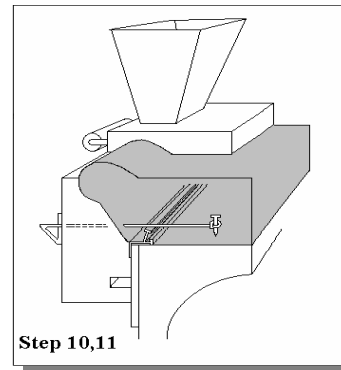
Step 7. Place the plastic washer (provided) on the tie wire. Push the tie wire through the form even with the tile strip. Hold the form with slight pressure and tie the tail of the tie wire around the nail. The tie wire must be on top of the tile strip, for stability.



Step 8. While pouring, make sure to tap the form to release air bubbles. This will help prevent honeycombing.

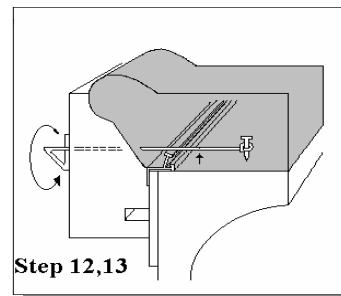
Step 9. Float the deck, then start the top edge (30 feet behind the float finish). The concrete needs to be very green when the top edge is applied for good adhesion.

Note : Use cream in the hopper.



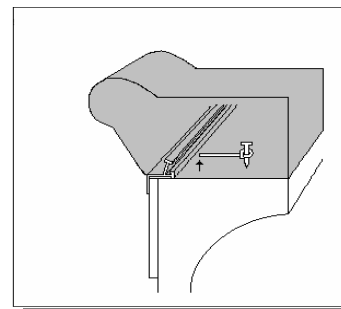
Step 10. Set the hopper on the form and the deck. Use the form as the guide. The form has tape on the top so the hopper can slide smoothly over it.

Step 11. Load the hopper and pull it along at a steady pace. (The hopper can be slightly vibrated to improve flow).



Step 12. Use the child safety grip tools for your corners and radii.

Step 13. When the concrete is strong enough to support it's own weight, the forms can be removed. To remove the forms, twist the tie wire head, it will break the tie wire inside the concrete. Then pull the form away exposing the face for the finish.



Note: Removing the form one piece at a time will help to keep the moisture in the concrete to allow adequate time for finishing.