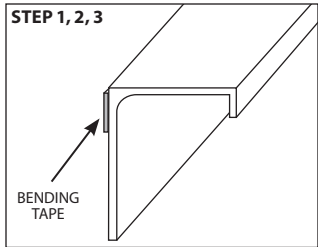


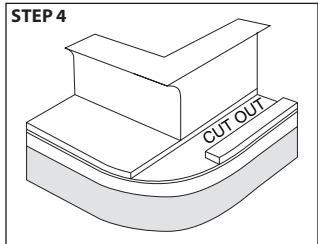
# LINER POOL COVER

## Instruction Sheet



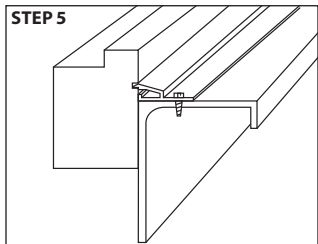
**STEP 1.** Clean the top of pool wall.

**STEP 2.** Wipe the face of the pool wall with a clean cloth to remove any moisture or dust. Screw the liner track down to the top of the pool wall with the bottom lip flush with the face of the pool wall.



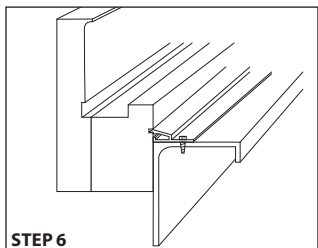
**STEP 3.** Run a piece of bending tape along the top of the pool wall. This tape will be used for easy removal of the extender after the job is complete. Let one end of the tape hang down into the pool approximately 24 inches.

**STEP 4.** Place the preformed corners in the corners of the pool on the opposite end of the roller. The cut out in the corners should run parallel with the track side (see illustration). Peel the paper from the double-faced tape one side at a time. Line up the groove of the corner with the top lip of the liner track. Press the form to the pool wall.

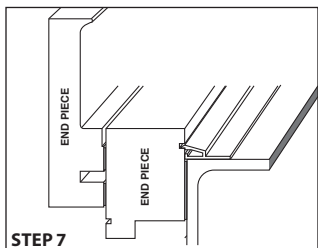


**NOTE:** On cold weather days the pool wall will need to be heated prior to setting the forms.

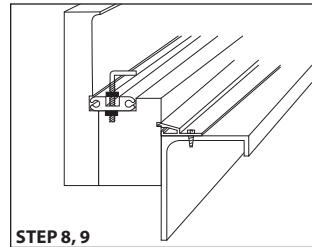
**STEP 5.** Peel the paper from the double-faced tape on the extender one foot at a time. Line up the groove in the extender with the top lip of the liner track and press to the pool wall.



**STEP 6.** Peel the paper from the double-faced tape on the face form 1 foot at a time. Line the bottom of the face form up with the bottom of the extender. Press the face form to the extender.



**STEP 7.** The end pieces should be set on the end of the pool, opposite of the roller. Place the extender marked "END PIECE", on the pool wall upside down.

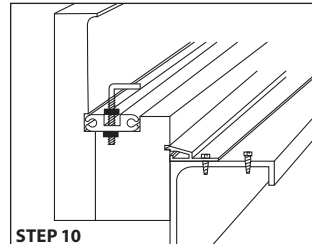


STEP 8, 9

**STEP 7.** The end pieces should be set on the end of the pool, opposite of the roller. Place the extender marked "END PIECE", on the pool wall upside down.

**NOTE:** The small piece of track that attaches to the pulley should have slotted holes. The slotted holes allow the track to slide out if you ever need to replace the pulley or cable. You can request the manufacturer of the track to make these holes.

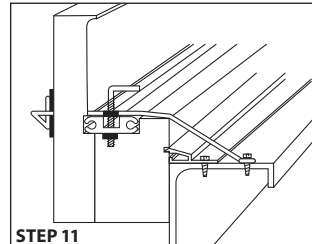
**STEP 8.** Pre-drill approximately 24 holes in the cover track on each side of the pool. Put a nut on the anchor and place the anchor into the track. Next, put on the second nut and leave 1/8" of thread exposed after the second nut. Do this for the entire track.



STEP 10

**STEP 9.** Place the track into the groove as shown in picture. Press the track down hard enough to make anchor bolt impression in the foam. Remove track and cut or burn hole in foam large enough to receive anchor and nuts. Insert the lead ropes and place the track back in the form.

**STEP 10.** Drive the self-tapping screws into the top of the pool wall 7" apart and 5" from the face of the pool wall. The screw should be driven only halfway into the top of the pool wall.

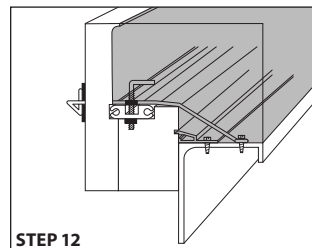


STEP 11

**STEP 11.** Push the tie wire with washer through the form as low as possible. Hold the form with slight pressure and tie the tail of the tie wire around the screw. The tie wire must be on top of the liner track.

**NOTE:** While pouring, make sure to tap the form to release air bubbles. This will help prevent honeycombing.

**STEP 12.** Once the concrete is strong enough to support its own weight, the face forms can be removed. To remove the form, twist the tie wire head to break the tie wire off inside the concrete. Pull the face form away, exposing the face to be finished. Leave the extenders until concrete is completely cured. Pull straight down on the bending tape to remove the extender.



STEP 12

**NOTE:** Removing the forms one piece at a time will help keep the moisture in the concrete to allow adequate time to finish.