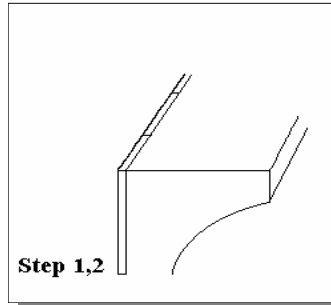


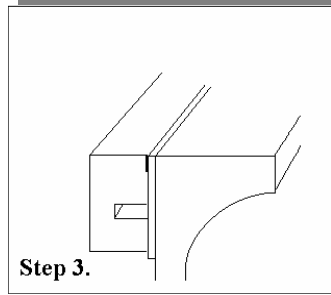
# STAMP-A-FORM

## Cantilever Form Instruction Sheet

**STEGMEIER**  
LLC



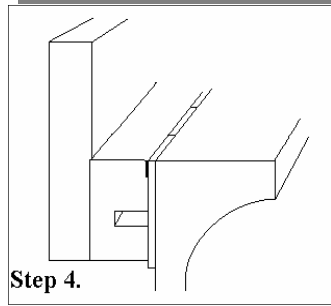
**Step 1.** Tile must be set from the high point of the bond beam and bedded out level. Scrape the top of the tile to remove any debris that would cause the tile strip to fit unevenly around the perimeter.



**Step 2.** Wipe the tile down with a clean cloth to remove any moisture or dust.

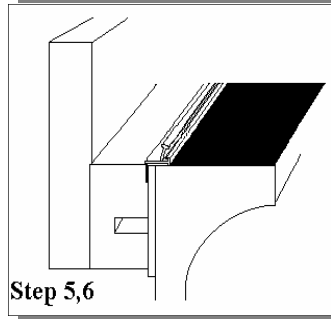
**Note :** During cold weather it may be necessary to warm the tile prior to sticking the form.

**Step 3.(Extender)** Peel the paper from the double-faced tape (one foot at a time). Then line the top of the extender with the top of the tile.



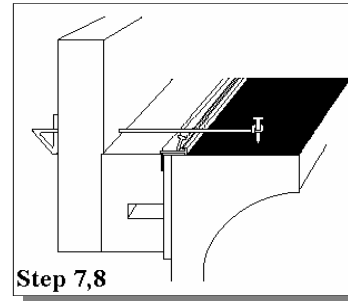
**Step 4. (Face Form)** Peel the paper from the double-faced tape (one foot at a time). Then line the bottom of the face form up with the bottom of the extender. Stick the face form to the extender.

**Step 5.** Insert the tile strip into the notch provided in the form, making sure it is pressed down tight to the tile. Be sure to butt the joints together, as this strip will be visible in the finished product.

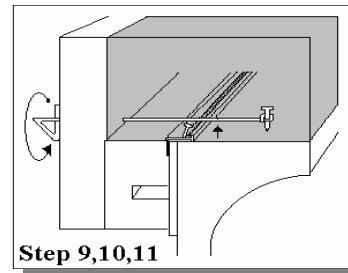


**Step 6.** Cover the top of the bond beam with 15 lb. felt to act as a "bond breaker", allowing the concrete deck to expand and contract without disturbing the tile.

**Structural Considerations:** If the installation is a coping pour, DO NOT apply a bond breaker as it is necessary to adhere the concrete to the bond beam

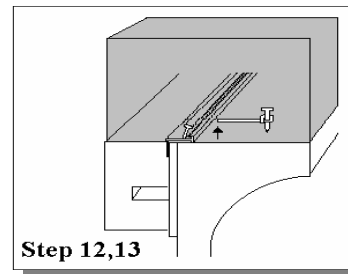


**Step 7.** Drive the concrete nails into the bond beam 14" apart and 8" from the tile.

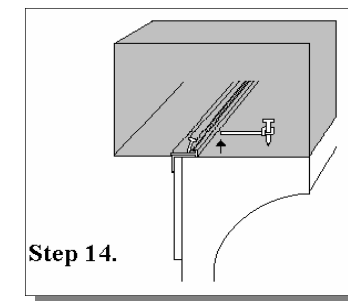


**Step 8.** Place the plastic washer (provided) on the tie wire. Push the tie wire through the form even with the tile strip. The tie wire should lay flush across the tile strip. Hold the form with slight pressure and tie the tail of the tie wire around the nail.

**Step 9.** While pouring tap the form to release air bubbles. This will help prevent honeycombing



**Step 10.** Once the concrete is strong enough to support its own weight, the face forms can be removed. To remove the form, twist the tie wire head, it will break the neck of the tie wire inside the concrete. Pull face form away. Leave the extenders in place until the following day.



**Note:** Removing the form one piece at a time will help keep the moisture in the concrete to allow adequate time for finish.

Technical Support (800) 382-5430

DOWNLOAD THE LATEST STEGMEIER APP, AVAILABLE FOR IOS AND ANDROID