

TEAR AWAY PLUMB STRIP

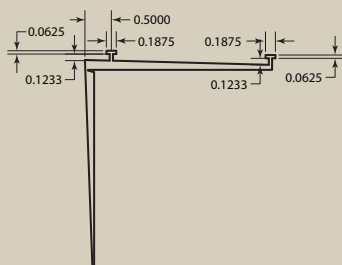
**NOW YOU CAN TEAR AWAY THE PLUMB STRIP
WHEN YOU'RE DONE!**

TEAR AWAY PLUMB STRIP

Tear Away Plumb Strips are PVC corner strips used to square the top edge of a fiberglass pool (one piece) in preparation for setting a Cantilever Form. Tear Away Plumb Strips are installed using double-faced tape and self-tapping screws. Tighter radii may be formed by adding additional relief cuts making Tear Away Plumb Strips adaptable to virtually any pool or step configuration. Once the Concrete is poured and the form is removed you can easily grab the exposed PVC below the concrete bend out away from the pool wall and tear away the PVC strip.



Tear Away Plumb Strip
mounts on top of pool wall
with screws.



STEGMEIER[®]

LLC

www.stegmeier.com

Toll-Free (800) 382-5430

Arlington, TX • Henderson, NV

DESCRIPTION	PART #
Tear Away Plumb Strip – Grey	TPS-G
Tear Away Plumb Strip Flex – Grey	TPS-G-FLEX

DOWNLOAD THE STEGMEIER LLC APP

