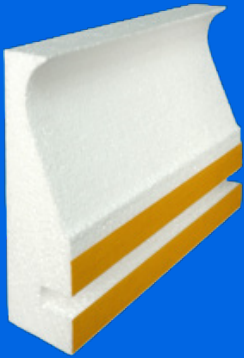


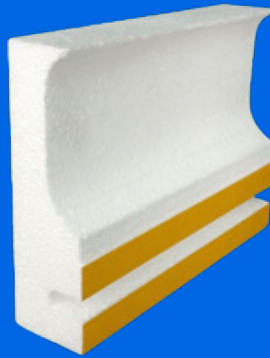
CANTILEVER DECK FORMS

Americas #1 choice for cantilever forms

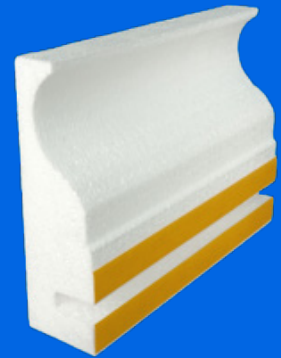
Stegmeier's Cantilever forms are foam forms that attach to the tile on gunite (or one-piece fiberglass) pools and secured with double face tape and tie wires. Set up time is minimal (usually the morning of the pour) and they may be removed early while the concrete is still wet enough to "slick finish" with a foam profile edging tool.



CAPSTONE



REGULAR



INTERMEDIATE

NO SPECIAL TOOLS REQUIRED



STEGMEIER
LLC

www.stegmeier.com
Toll- Free (800) 382-5430

Arlington, TX

Henderson, NV

DOWNLOAD THE STEGMEIER LLC APP

